

Thank You!

Thank you for choosing Humminbird®, America's #1 name in fishfinders. Humminbird® has built its reputation by designing and manufacturing top-quality, thoroughly reliable marine equipment. Your Humminbird® is designed for trouble-free use in even the harshest marine environment. In the unlikely event that your Humminbird® does require repairs, we offer an exclusive Service Policy-free of charge during the first year after purchase, and available at a reasonable rate after the one-year period. For complete details, see the separate warranty card included with your unit. We encourage you to read this operations manual carefully in order to get full benefit from all the features and applications of your Humminbird® product.

The PiranhaMax30 is a combo unit that allows you to choose either Transducer user mode or SmartCast™ user mode. This manual addresses SmartCast™ user mode only. See the PiranhaMax30 Transducer Mode Operations Manual also included with this unit for Transducer user mode information. With this purchase you should have:

- PiranhaMax30 Control Head
- One Advanced Remote Sonar Sensor - RSS
- Portable Carry Case
- Portable Mount Transducer
- This SmartCast™ Operations Manual
- The PiranhaMax30 Transducer Operations Manual.

If any of these components are missing or are not included, please contact our Customer Resource Center at 1-334-687-0503 or visit our website at www.humminbird.com.

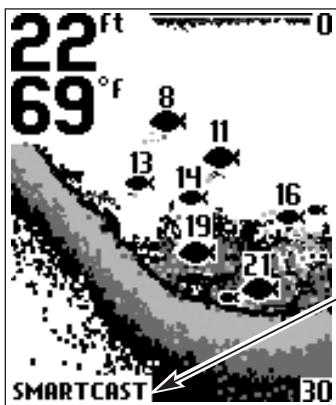
WARNING! This device should not be used as a navigational aid to prevent collision, grounding, boat damage, or personal injury. When the boat is moving, water depth may change too quickly to allow time for you to react. Always operate the boat at very slow speeds if you suspect shallow water or submerged objects.

WARNING! Disassembly and repair of this electronic unit should only be performed by authorized service personnel. Any modification of the serial number or attempt to repair the original equipment or accessories by unauthorized individuals will void the warranty. Handling and/or opening this unit may result in exposure to lead, in the form of solder.

WARNING! This product contains lead, a chemical known to the state of California to cause cancer, birth defects and other reproductive harm.

User Modes

The PiranhaMax30 has two different user modes:



SmartCast™: This user mode allows you to operate the PiranhaMax30 with an Advanced RSS.

Transducer: This user mode allows you to operate the PiranhaMax30 with the Portable Mount Transducer.

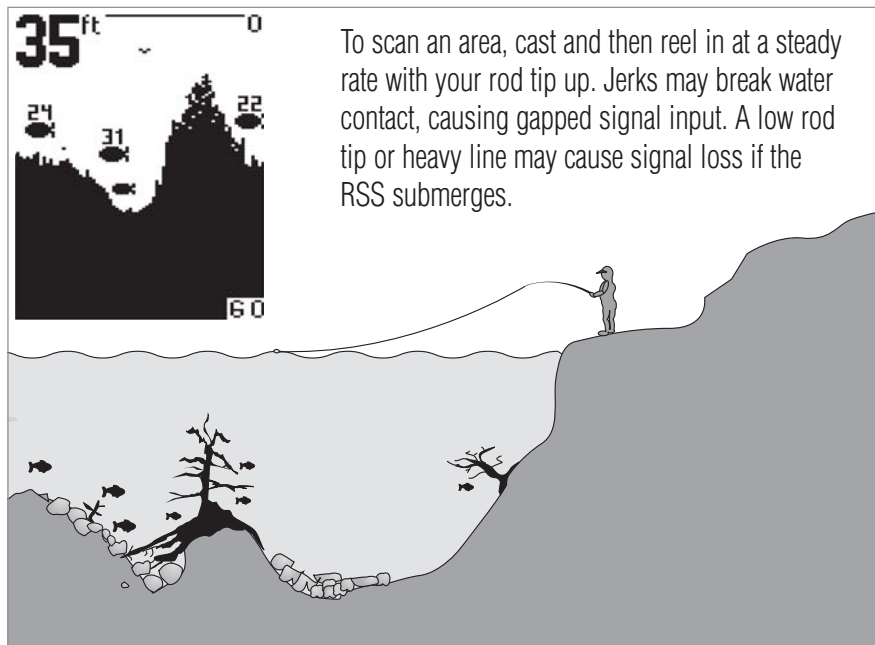
Use the User Mode menu choice to change between these two user modes.

NOTE: If a transducer is not connected to the PMax30 the unit will automatically default to SmartCast™ user mode. If a transducer is connected then the PMax30 will default to the last mode used prior to powering off.

When "SmartCast" is displayed on the screen, the unit is in SmartCast™ mode.

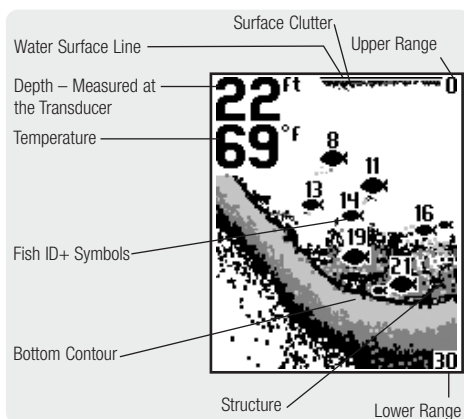
Using the SmartCast™ User Mode

The SmartCast™ user mode allows you to use the Advanced Remote Sonar Sensor (RSS) wireless fishfinder that comes with your PiranhaMax. Simply attach the RSS to the end of your fishing line and cast it into the water as you would a normal float or lure, then power on the PiranhaMax and you are ready to fish. In SmartCast™ mode, your PiranhaMax uses sonar technology to send sound waves from the RSS into the water.



The returned “echoes” are transmitted with wireless technology to the display unit and plotted on the LCD. New information appears on the right. As this information moves to the left a very accurate picture of the underwater world is created, including the depth of underwater objects such as the bottom, fish, and structures.

WARNING! The electronic parts in the Remote Sonar Sensor (RSS) are made to withstand use when casting into water. Because shock from abrupt contact with rocks can damage your RSS, we recommend using your RSS in water deeper than 1 foot only.



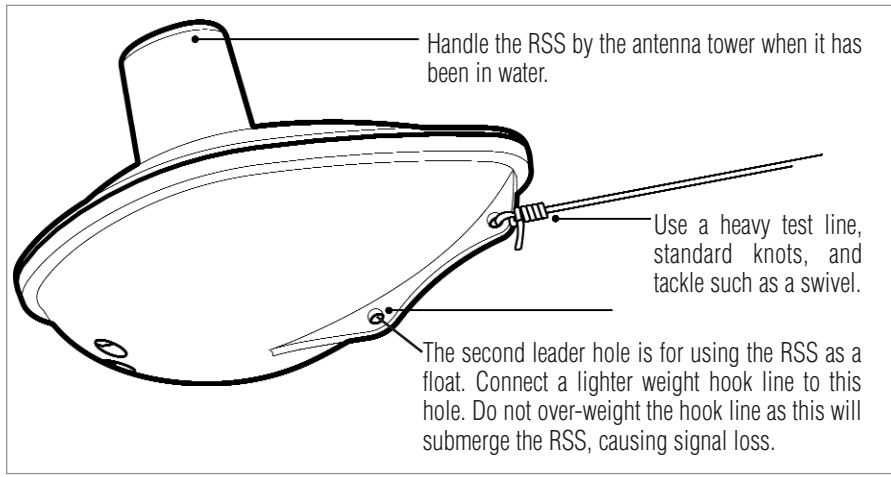
While in SmartCast™ mode, the Advanced RSS can be used in two distinct ways:

Sonar Graph: The RSS can be used to create a sonar graph of the bottom. Cast the RSS into the water beyond an area of interest. Retrieving the RSS slowly and steadily will produce a screen detailing structure, fish and bottom detail. Rhythmic wave action and rocking may cause the display of a rippled bottom.

Stationary Float: The RSS can be used as a float in a stationary location to monitor the area below, giving you a live update as fish approach your bait.

Attaching the RSS

The line coming from your reel can be tied off to the front hole in the RSS. If you wish to also use the RSS as a conventional float, use the second hole to attach your hook using a lighter weight line. A snag will break the lighter line if you have to break free. Slip line techniques are not recommended because of the higher risk of losing the RSS. If you do use the slip line method, use a lighter weight line after the lower stop, enabling retrieval of the RSS if the lower line with hook breaks away.



CAUTION: You will increase the possibility of breaking your line if you use light test pound line on your reel. The RSS is positively buoyant (is buoyant under its own weight plus 0.2 ounces of bait and lead weight.) The maximum amount of weight for any attachment to the RSS is approximately 0.2 ounces (5.67 grams), and includes the combined weight of any hook, line, weight, swivel/snap swivel and bait that is attached to the RSS. The RSS itself weighs 1 ounce, and therefore light test line might break.

Store the RSS in a dry, non-metallic container, such as a tackle box, in a separate compartment, and isolated from any metallic devices.

WARNING! The bottom of the RSS should not be handled during sonar operation, as this may cause physical discomfort and may result in personal injury in the form of tissue damage. Handle the RSS only by the antenna tower when it has been in the water.

WARNING! The RSS (Remote Sonar Sensor) is not intended for use by children younger than 6 years old without adult supervision as the RSS may represent a choking hazard to small children.

WARNING! Handling and/or opening this unit may result in exposure to lead, in the form of solder.

RSS Power

The Advanced Remote Sonar Sensor (RSS) has a non-replaceable Lithium battery with a shelf life of three years that will last for approximately 500 hours of in-water use (when the nighttime LED is turned off).

Discard the used RSS in compliance with local laws as you would any electronic component or battery.

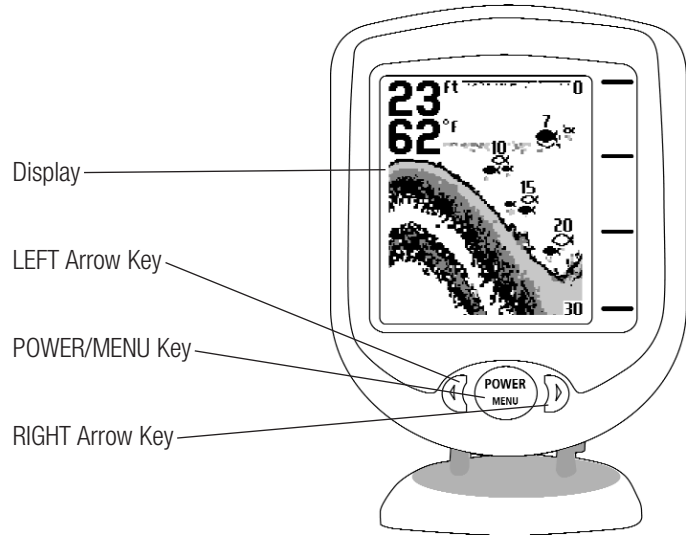
The RSS has contacts that perceive when the device is immersed in the water. These contacts turn on the Sonar Transmitter/Receiver and begin transmitting the sonar information via RF to the display. The RSS automatically stops using power a few seconds after being pulled out of the water.

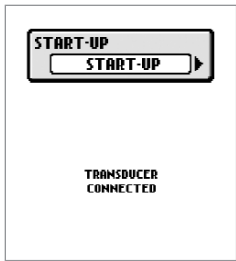
WARNING! Do not place the RSS in a wet area when not in use as this will turn on the RSS and shorten its usable life. Store the RSS in a dry area when not in use to conserve power. Never place the RSS in a wet area of a boat or on a metal surface that could accidentally power it on.

NOTE: If the RSS was used in salt water, rinse it with fresh water before storing it.

Powering ON and OFF

Press and release the POWER-MENU key to power the PiranhaMax on. Press and hold the POWER-MENU key until the unit shuts down to power off.





When the PiranhaMax powers on, the Start-Up menu temporarily appears. From this menu, use the arrow keys to select either Start-Up, Simulator, or SetUp. If you do nothing, the unit will default to normal on the water use.

- Use Start-Up for on the water use
- Use Simulator for learning how to use the system with simulated sonar data; access Simulator by pressing the Right Arrow Key once
- Use SetUp to display additional set-up menu choices; access SetUp by pressing the RIGHT Arrow Key twice (See **SetUp Menu** for more information).

The Menu System

A simple menu system allows you to access your PiranhaMax's adjustable settings. To activate the menu system, press the POWER-MENU key. Press the POWER-MENU key repeatedly to display the PiranhaMax menu settings, one at a time. When a menu setting is on the display, use the RIGHT and LEFT Arrow keys to adjust the menu setting. Menu settings are removed from the screen automatically after several seconds. In Normal operating mode, most menu settings saved to memory will not return to their default values when the unit is turned off. See individual menu choices for more information.

NOTE: Each time the POWER-MENU key is pressed, the backlight momentarily illuminates for easy viewing at night. Adjust the LIGHT menu setting to keep the backlight on.

NOTE: If Simulator Mode is selected from the Start-Up Menu and a transducer is plugged in, some menu setting changes will be saved in memory even after the unit is powered down. Menu setting changes will not be saved from Simulator mode when a transducer is not connected.

NOTE: Turning on the SetUp menu choice from the Main Menu System allows you to access additional set-up menu choices. See SetUp Menu for more information.

Light



(Setting Not Saved in Memory)

Press the POWER-MENU key until LIGHT appears. Use the backlight for night fishing. Select either 0 (Off), or 1 through 5 to activate the backlight at the desired level. (0 to 5, Default = 0)

NOTE: Continuous backlight operation will significantly decrease the battery life for PiranhaMax Portables.

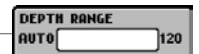
Sensitivity



(Setting Saved in Memory)

Press the POWER-MENU key until SENSITIVITY appears. Sensitivity controls how much detail is shown on the display. Increasing the sensitivity shows more sonar returns from small baitfish and suspended debris in the water; however, the display may become too cluttered. When operating in very clear water or greater depths, increased sensitivity shows weaker returns that may be of interest. Decreasing the sensitivity eliminates the clutter from the display that is sometimes present in murky or muddy water. If Sensitivity is adjusted too low, the display may not show many sonar returns that could be fish. (0 – 10, Default = 5)

Depth Range



(Setting Not Saved in Memory)

Press the POWER-MENU key until DEPTH RANGE appears. Automatic is the default setting. When in automatic, the lower range will be adjusted by the unit to follow the bottom. (Auto, 10 to 120 Feet, Default = Auto)

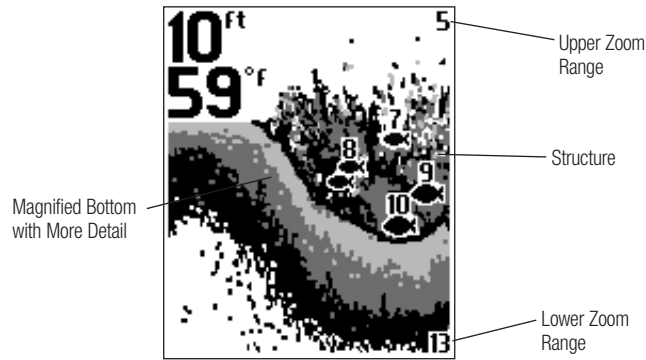
NOTE: In manual operation, if the depth is greater than the depth range setting, the bottom will not be visible on the display. Select AUTO to return to automatic operation.

Zoom



(Setting Not Saved in Memory)

Press the POWER-MENU key until ZOOM appears. Select Auto to magnify the area around the bottom in order to reveal fish and structure close to the bottom that may not be visible during normal operation. When ZOOM is set to Auto, the upper and lower Depth Ranges are automatically adjusted to keep the area above and below the bottom on the display. Select Off to return to normal operation. (Off, Auto, Manual Ranges, Default = Off)



There is also a series of manual ranges which can be selected. The manual depth ranges are determined by the present depth conditions.

Fish Alarm



(Setting Saved in Memory)

Press the POWER-MENU key until FISH ALARM appears.

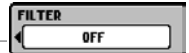
Select Off for no fish alarm, or one of the following symbols to set the alarm. An alarm will sound when the PiranhaMax detects fish that correspond to the alarm setting. Fish Alarm will only sound if Fish ID+ is also set to On. (Off, Large, Large/Medium, All, Default = Off)

Large fish only 

Large/Medium fish only. 

All fish. 

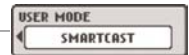
Filter



(Setting Saved in Memory)

Press the POWER-MENU key until FILTER appears. Select either Off or On. Filter adjusts the sonar filter to limit interference on the display from sources such as your boat engine, turbulence, or other sonar devices. (On, Off, Default = Off)

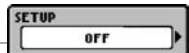
User Mode



Press the POWER-MENU key until USER MODE appears. USER MODE selects the user mode. (SMARTCAST, TRANSDUCER)

NOTE: If a transducer is not connected to the PMax30 the unit will automatically default to SmartCast™ user mode. If a transducer is connected then the PMax30 will default to the last mode used prior to powering off.

SetUp Menu



Press the POWER-MENU key until SetUp appears. Select either Off or On. (Off, On, Default = Off)

When you choose SetUp, additional menu choices will become available that are not a part of the Main Menu system. After selecting SetUp, press the POWER-MENU key to display the SetUp menu choices, one at a time. SetUp Menu choices include:

- Contrast
- Fish ID+
- Bottom View
- Battery Alarm
- Languages (International Units Only)
- Units
- Channel Select.

Scroll through all SetUp menu choices to exit the SetUp menu.

Contrast (SetUp Menu)

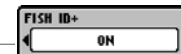


(Setting Saved in Memory)

Make sure that the SetUp menu is selected, then press the POWER-MENU key until CONTRAST appears. Select a setting from 1 through 5. (1 to 5, Default = 3)

Scroll through all SetUp menu choices to exit the SetUp menu.

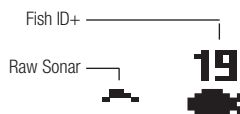
Fish ID+ (SetUp Menu)



(Setting Saved in Memory)

Make sure that the SetUp menu is selected, then press the POWER-MENU key until FISH ID+ appears. Select either Off to view “raw” sonar returns, or On to view Fish symbols. Fish ID+ uses advanced signal processing to interpret sonar returns, and will display a Fish Symbol when very selective requirements are met. A select number of possible fish returns will be displayed with their associated depth. (On, Off, Default = On)

Scroll through all SetUp menu choices to exit the SetUp menu.

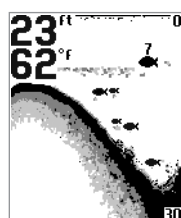


Bottom View (SetUp Menu)



(Setting Saved in Memory)

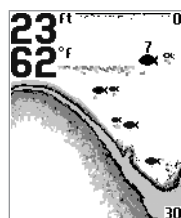
Make sure that the SetUp menu is selected, then press the POWER-MENU key until BOTTOM VIEW appears. Bottom View selects the method used to represent the bottom and structure on the display. (Structure ID, Black, WhiteLine, Inverse, Default = Inverse)



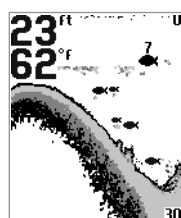
Structure ID® represents weak returns as light pixels and strong returns as dark pixels. This has the benefit of ensuring that strong returns will be clearly visible on the display.



Black (Bottom Black) displays all pixels below the bottom contour as black, regardless of signal strength. This has the benefit of providing a high contrast between the bottom and other sonar returns on the display.



WhiteLine® highlights the strongest sonar returns in white resulting in a distinctive outline. This has the benefit of clearly defining the bottom on the display.



Inverse is a method where weak returns are shown with dark pixels and strong returns with lighter pixels. This has the benefit of ensuring that weak signals will be clearly visible on the display.

Scroll through all SetUp menu choices to exit the SetUp menu.

Battery Alarm (SetUp Menu)

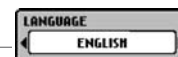


(Setting Saved in Memory)

Make sure that the SetUp menu is selected, then press the POWER-MENU key until BATTERY ALARM appears. Select Off or 8.5 to 13.5 Volts. Battery Alarm sounds when the input battery voltage is equal to or less than the menu setting. (Off, 8.5 to 13.5 Volts, Default = Off)

Scroll through all SetUp menu choices to exit the SetUp menu.

Language (SetUp Menu: Int'l Only)

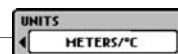


(Setting Saved in Memory)

Make sure that the SetUp menu is selected, then press the POWER-MENU key until LANGUAGE appears (International Units Only). LANGUAGE selects the display language for menus. (Settings vary, Default = English)

Scroll through all SetUp menu choices to exit the SetUp menu.

Units (SetUp Menu)



(Setting Saved in Memory)

Make sure that the SetUp menu is selected, then press the POWER-MENU key until UNITS appears. UNITS selects the units of measure. (Feet/F, Meters/C, Fathoms/C, Default = Feet/F for domestic units, and Meters/C for international units, where F stands for Fahrenheit and C stands for Celsius)

Scroll through all SetUp menu choices to exit the SetUp menu.

Channel Select (SetUp Menu)



(Setting Saved in Memory)

Make sure that the SetUp menu is selected, then press the POWER-MENU key until CHANNEL SELECT appears (SmartCast™ user mode only). CHANNEL SELECT selects the type of RSS you are using. (A, B, Default = A)

Scroll through all SetUp menu choices to exit the SetUp menu.

NOTE: The Channel Select setting must match the actual hardware configuration of your RSS in order for the RSS to function. See Using the Advanced RSS for information about changing the channel of your Advanced RSS manually using the wet switch on the Advanced RSS.

Channel A and B RSS Units

Your PiranhaMax unit comes with an Advanced RSS. This Advanced RSS may be programmed to either Channel A or Channel B. This A/B Channel option gives you the flexibility to switch to a different channel if another angler is using a PiranhaMax30 or SmartCast™ unit within 150 feet of your RSS to reduce possible interference. See **Changing the Channel on the Advanced RSS** for details on selecting either Channel A or Channel B.

NOTE: RSS units, regardless of channel, may generate erratic depth readings as a result of sonar interference when used in close proximity (closer than 40 feet) to each other or to other sonar devices.

Understanding the Advanced RSS

The Advanced RSS provides the following functionality:

- Water Surface Temperature
- Blinking Light for nighttime use
- Grayscale Sonar Data
- A/B Channel Select.

When you are using the PiranhaMax in SmartCast™ mode, grayscale sonar data and water temperature will be displayed automatically on the screen.

You must manually program the Advanced RSS in order to turn the light on or off or to change the RSS channel setting to A or B.

Default settings on new products are Light = OFF and Channel = A.

RSS Programming Mode

You may change the light setting or the channel type on the Advanced RSS using a programming mode that is accessed by touching the wet switch contacts on the bottom of the RSS.

NOTE: Please read this and the next section BEFORE you try to program the Advanced RSS using the wet switch contacts. Specific step-by-step procedures to turn on the light and to change the channel follow this section. You will find it easier to perform these steps once you have grasped the way the programming mode works.

The programming mode allows you to:

- turn on the blinking light
- switch the Advanced RSS Channel from A to B.

The PiranhaMax Control Head temperature readout provides user feedback to help you make the correct selections. The temperature readout will change on the Control Head to 40°F (4°C), 45°F (7°C), 50°F (9°C) or 55°F (12°C) to signify the following settings.

NOTE: If the temperature readout is set for degrees Celsius then the temperature readout will change on the Control Head to 4,7,9 or 12 to signify the following settings.

Light setting

Temp changes to... Means that...

- 40°F (4°C) Blinking light is OFF (factory default)
- 45°F (7°C) Blinking light is ON (but only blinks when the Advanced RSS is in the water)

Channel setting

Temp changes to... Means that...

- 50°F (9°C) RSS is set to CHANNEL A (factory default)
- 55°F (12°C) RSS is set to CHANNEL B

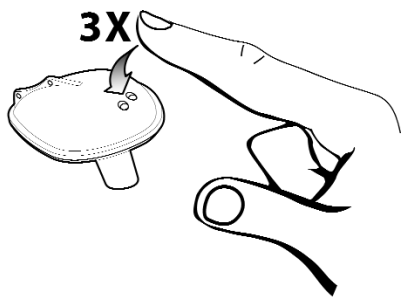
IMPORTANT: The PiranhaMax Control Head must be turned on and the CHANNEL SELECT SetUp menu on the Control Head must be set to Channel A (even if the RSS is set to Channel B) before you can see the feedback on the Control Head temperature readout.

NOTE: The Advanced RSS programming mode will time out after 20 seconds of no user activity, display the Start-Up screen, and return the RSS to normal operation.

NOTE: If the temperature display returns to a normal reading, or the Start-Up screen appears on the display, you are no longer in programming mode.

How the Wet Switch™ Works

In the following sections, you will use the wet switch contacts on the bottom of the Advanced RSS to enter programming mode and change the Light and Channel settings. Before you try these procedures for the first time, please read through this section to familiarize yourself with the way the Wet Switch™ works.



Your finger should be moist, but not dripping, before you touch the Wet Switch™. You can achieve the correct dampness by dipping your finger in water, then dabbing your finger twice on a towel.

A “touch” means touching both wet switch contacts at the same time with your moistened finger, using medium pressure. The time between touches needs to be one second or less.

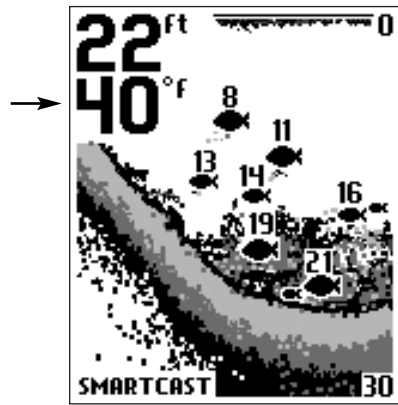
NOTE: Your finger must make contact with both of the wet switch pins simultaneously in order to tap them successfully.

See the procedures that follow for specific instructions on turning the light on or off or changing the channel from A to B.

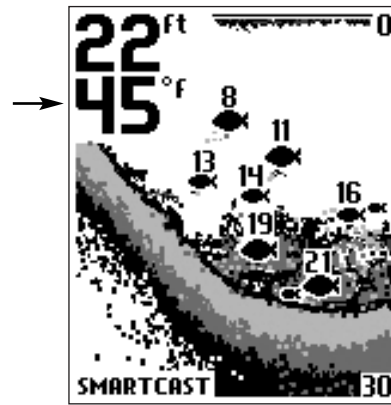
Turning on the Advanced RSS Blinking Light

To turn on the blinking nighttime fishing light:

1. Wet your finger and tap the wet switch on the Advanced RSS three times (the time between touches needs to be one second or less) to enter the Light programming mode. The PiranhaMax temperature reading on the Control Head will change to show a temperature reading of 40°F (4°C) (blinking light OFF).
2. To change the setting to 45°F (7°C) (blinking light ON) touch and release the wet switch contacts once more. Wait two seconds and then confirm that the temperature reading on the Control Head has changed to 45°F (7°C). Single touches will toggle the setting between 40°F (4°C) and 45°F (7°C).



Temperature of 40 Means LED is OFF



Temperature Setting of 45 Means LED is On

NOTE: When the LED is set to ON it will flash every four seconds when the RSS is in operation (i.e. when the wet switch is submerged). Even when the LED is set to ON, the LED will not flash unless the wet switch is activated. If you want to test the RSS to make sure the LED is set to ON before using the RSS, wet your finger and hold it on the wet switch; if the LED is set to ON, the LED will begin to flash.

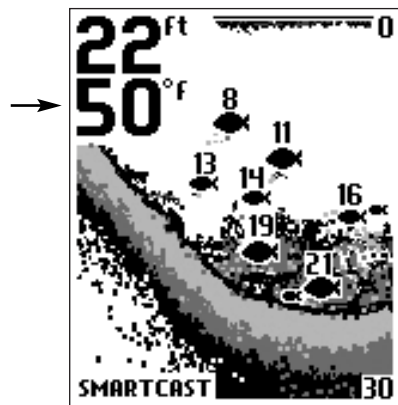
NOTE: Repeat steps 1 and 2 to turn off the LED when finished with night fishing.

3. Once you have made your selection you can either wait 20 seconds for programming mode to time out (the Start-Up screen will appear on the Control Head display), or continue immediately to the next procedure to change the channel.

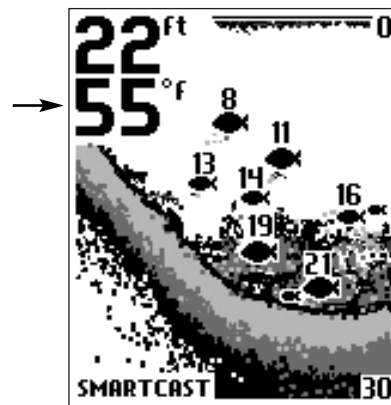
Changing the Channel on the Advanced RSS

To change the channel type on the Advanced RSS:

1. From the Light programming mode (see Turning on the Advanced RSS Blinking Light), touch and release the wet switch contacts twice more with your moist finger to change from the Light programming mode to the Channel programming mode. The temperature reading on the Control Head will change to show a temperature reading of 50°F (9°C) (channel set to A).
2. To change the setting to 55°F (12°C) (channel set to B) touch and release the wet switch contacts once more. Wait two seconds and then confirm that the temperature reading on the Control Head has changed to 55°F (12°C). Single touches will toggle the setting between 50°F (9°C) and 55°F (12°C).



Temperature of 50 Means Channel is Set to A



Temperature of 55 Means Channel is Set to B

3. Once you have made your selection, wait 20 seconds for programming mode to time out (the Start-Up screen will appear on the Control Head).
5. Use the SetUp Channel Select menu on the PiranhaMax Control Head to switch the software to match the new channel designation on the Advanced RSS. See Channel Select (SetUp Menu) for more information.

CAUTION: Make sure that you change the Channel Selection on the Control Head to match the new Advanced RSS Channel before using the Advanced RSS.

Using a First Generation RSS

First generation RSS units still sold with other SmartCast™ products come in two versions, Channel A and Channel B (RF40A and RF40B), and are both compatible with the PiranhaMax30.

NOTE: When using either an RF40A or RF40B RSS with the PiranhaMax30, you will not get water temperature or grayscale sonar information, and you will not be able to turn on the LED or change the channel on the RSS. You will still be able to read digital depth and bottom contour information.

NOTE: When using an RF40A or RF40B RSS, make sure to select the matching channel from the CHANNEL SELECT menu on the PiranhaMax30 Control Head.

Maintenance

Your PiranhaMax is designed to provide years of trouble-free operation with virtually no maintenance. Follow these simple procedures to ensure your PiranhaMax continues to deliver top performance.

If the unit comes into contact with salt spray, wipe the affected surfaces with a cloth dampened in fresh water.

Do not use a chemical glass cleaner on the lens - this may cause cracking in the lens.

When cleaning the LCD protective lens, use a chamois and non-abrasive, mild cleaner. Do not wipe while dirt or grease is on the lens. Be careful to avoid scratching the lens.

Never leave the unit in a closed car or trunk—the extremely high temperatures generated in hot weather can damage the electronics.

RSS Maintenance

After using the RSS in salt water, wipe the affected surfaces with a cloth dampened with fresh water. The RSS Wet Switch™ pins must be rinsed with fresh water after exposure to salt water to prevent corrosion.

If your RSS remains out of the water for a long period of time, it may take some time to wet it when returned to the water. Small air bubbles can cling to the surface of the RSS and interfere with proper operation. Wipe the face of the RSS with a wet cloth to remove them.

Never leave the RSS in a closed car or trunk - the extremely high temperatures generated in hot weather can damage the electronics.

If sonar performance becomes weak (i.e., there are bottom gaps or "0" depth readings) the bottom of the RSS needs to be cleaned with a drop or two of a 5 to 10 percent solution of liquid dishwashing detergent and water. Use approximately one tablespoon detergent to 8 ounces of water to remove oils from the face of the RSS, then wipe with a damp cloth.

Troubleshooting

Do not attempt to repair the PiranhaMax yourself. There are no user-serviceable parts inside, and special tools and techniques are required for assembly to ensure the waterproof integrity of the housing. Repairs should be performed only by authorized Humminbird technicians.

Many requests for repair received by Humminbird involve units that do not actually need repair. These units are returned "no problem found." If you have a problem with your PiranhaMax, use the following troubleshooting guide before calling the Customer Resource Center or sending your unit in for repair.

NOTE: Retrieving the RSS too rapidly, or the repetitive rocking motion of rough water, can result in loss or distortion of the bottom picture. This will cause intermittent screen display. For best bottom detail, perform a smooth and slow reel-in with constant speed and the rod tip up (holding the rod tip low or using a heavy line may cause the RSS to submerge and momentarily lose radio contact). The RSS has a maximum transmit range of 100 feet (30 meters). If the unit is cast or drifts more than 100 feet away from the receiver, the signal may be inconsistent or lost. Raising the SmartCast™ slightly above ground level will also increase signal capture.

1. The PiranhaMax loses signal in SmartCast™ User Mode.

If the PiranhaMax, while in SmartCast™ user mode, is not able to get an RF signal from the RSS, the display will stop updating (the screen will freeze) and the SmartCast™ screen will be displayed after several seconds. Whenever reception is lost or the RSS emerges from the water for more than a few seconds, the SmartCast™ screen will be displayed until the RSS is placed back in the water and reception is regained.

- The RSS uses line-of-sight wireless technology. If objects are placed between the RSS and the PiranhaMax, reception may be lost.
- The RSS depth range is 2 to 120 feet (0.6 to 35 meters). Erratic readings may occur in water that is shallower than 2 feet. In addition, because of the nature of sonar, this product is not intended for use in swimming pools or small enclosed bodies of water.
- Reeling the RSS too fast can cause loss of signal and the screen will freeze
- Check the buoyant balance between the RSS and your tackle; over 0.2 ounce will submerge the RSS, causing signal loss.
- The RSS may not obtain its maximum RF distance of 100 feet unless the water is smooth. Waves or chop may reduce the RF range significantly.

2. When in very shallow water, I get gaps in the bottom reading and inconsistent digital depth indication.

The RSS will work reliably in water 2 feet (0.6 meters) or deeper. The depth is measured from the RSS. A transmitter (RSS) to receiver (PiranhaMax) distance of greater than 100' may cause intermittent screen display. Excessively rough water may cause the RSS to submerge, again losing contact.

3. The display shows fluctuating depth readings and excessive clutter, including vertical bars that may be drawn on top of fish icons.

The PiranhaMax system, when set to SmartCast™ user mode, comes with the capability to receive separate signals from Channel A RSS or a Channel B RSS. Two A- or B-type RSS units used simultaneously, as well as one A- and one B-type RSS unit used simultaneously, can cause RF interference between each other.

4. The screen jumps and the bottom has an abrupt change; sometimes a vertical line is missing or a black line from top to bottom is displayed.

This screen image jump is due to an automatic change in depth. New returns graphed at a different scale will not match up with the historic data already graphed at a higher or lower scale. Vertical lines can also occur as the radio signal from the RSS is lost and then regained in rough water conditions.

International Purchases

A separate warranty is provided by international distributors for units purchased outside the United States. This warranty is included by your local distributor and this distributor maintains local service for your unit. Warranties are only valid in the area of intended distribution. Units purchased in the United States or Canada must be returned to our factory in the United States for service.

SPECIFICATIONS

Power Requirement:
Control Head: Eight AA 1.5 Volt
Alkaline batteries (not included)
RSS: One non-replaceable
Lithium RSS Battery
Display Type STN
Depth Capability 2 - 120 feet
(0.6 - 35 meters)
Sonar Coverage 90° @-10 dB*
Sonar Operating Frequency.....115 kHz
Operational Wireless Frequency916.5 mHz
(433.92 mHz for European models)
Operational Range 100 feet (30 meters)
ApprovalEuropean models
are CE-approved.

**Area of bottom coverage equals twice the current depth.*

CONTACT HUMMINBIRD

Your Humminbird accessory is designed for trouble-free operation and is backed by a one year warranty. If you have any questions, contact our

Humminbird Customer Resource Center:

By Telephone
(Monday - Friday 8:00 a.m. to
4:30 p.m. Central Standard Time):

334-687-0503

By e-mail
(typically we respond to your e-mail within
three business days):

custserv@johnsonoutdoors.com

For direct shipping, our address is:

**Humminbird
Service Department
678 Humminbird Lane
Eufaula, AL 36027 USA**

